

User Guide

Congratulations on your new ATARI 2600™: My Play Watch! This guide will provide information on how to use and operate the ATARI 2600™: My Play Watch.



HOW TO PLAY

TROUBLE SHOOTING

Table of Contents

3	Introducing My Play Watch What's in the Box
4	Trouble Shooting Charging
5	Getting Started
6	Home Screen Navigation
7	Playing ATARI 2600™ game programs Game Options Exiting games
8	Waking the Screen
9-10	Applications
11-12	Settings
13	Frequently Asked Questions (FAQs) Power Off
14-15	Important Information Warranty

Introducing My Play Watch

Your ATARI 2600™: My Play Watch lets you step into the future of retro gaming with a timepiece that blends nostalgia with cutting-edge technology.

It comes equipped with a high-quality touchscreen, time and fitness tracking, and built-in game programs that bring the ATARI 2600™ console to your wrist.

What's in the Box?

The My Play Watch box comes with:

- 1x ATARI 2600™: My Play Watch
- 1x USB Compatible Magnetic Charging Cable
- 2x ATARI 2600™ Watch Bands



Trouble Shooting



If issues occur during the operation of My Play Watch, it is recommended to perform a reboot.

To reboot My Play Watch, press and hold the Crown button for 5 seconds.

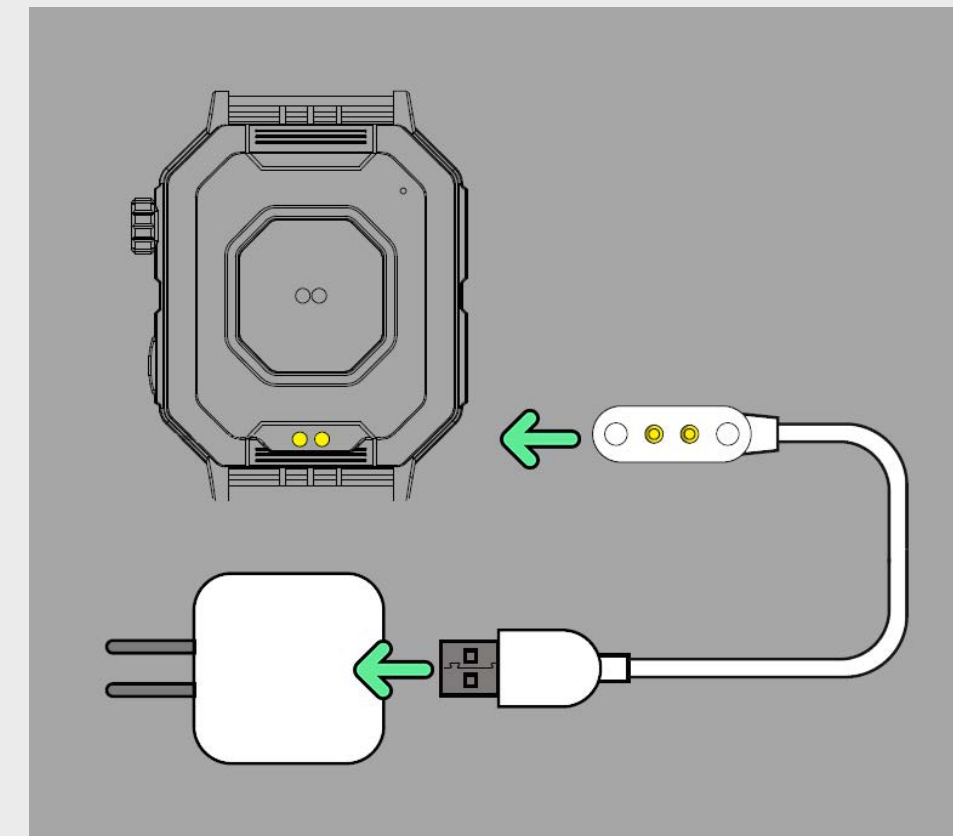
If successful, the screen should turn black. You can then release the Crown button, and the My Play Watch logo should appear after a short delay.

If the screen remains black after following these steps, you may need to charge your device. Follow the instructions in the Charging section of this guide to do so.

If your watch still has issues, please contact help@myplaywatch.com

Charging

Make sure your watch is charged prior to using it. My Play Watch comes with a Magnetic Charger that connects through USB.



To Charge

1. Plug the USB end of charging cable into a power adapter or USB powered outlet (sold separately)
2. Place the magnetic charging cable on top of the charging ports located on the back of the watch*
3. Wait for the watch to charge

When the watch is at low battery, it may take 2-3 hours to fully charge.

**The direction of the charging cable matters! The magnets will prevent you from connecting the cable the wrong way*

Power On

To turn on your watch, press and hold the crown button until the My Play Watch logo appears.

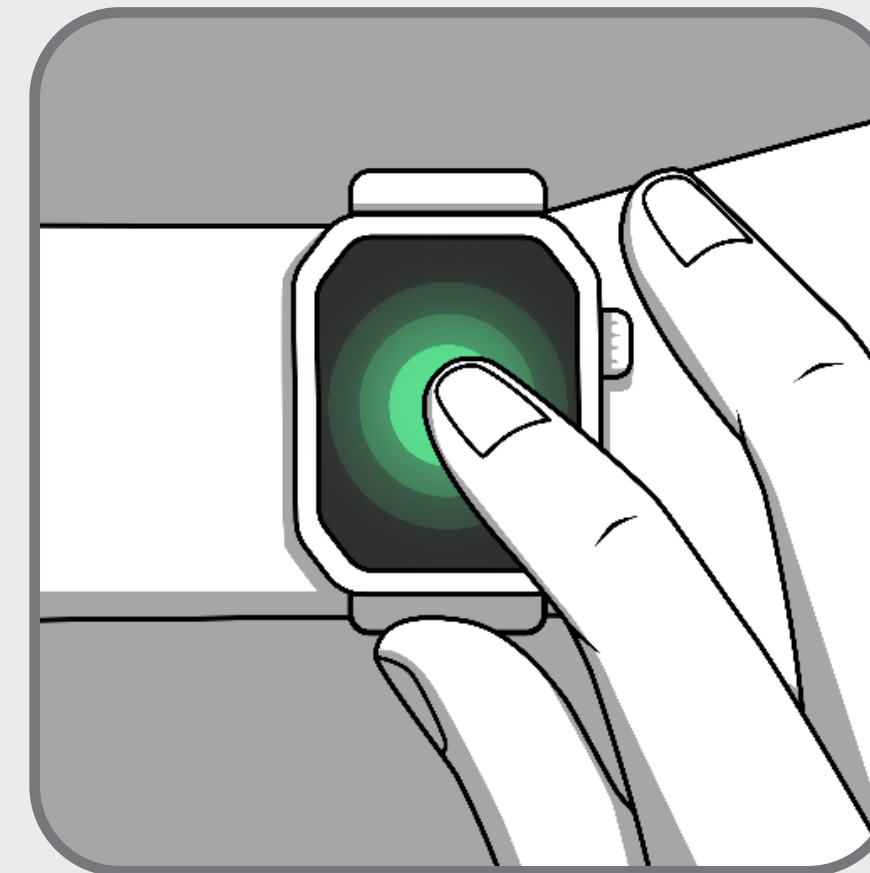
If the screen remains black, you may need to charge your watch first.



Getting Started

Press the Crown button to wake up your watch. A first time set-up process will guide you through setting the date, time, and a goal for the number of daily steps you want to achieve.

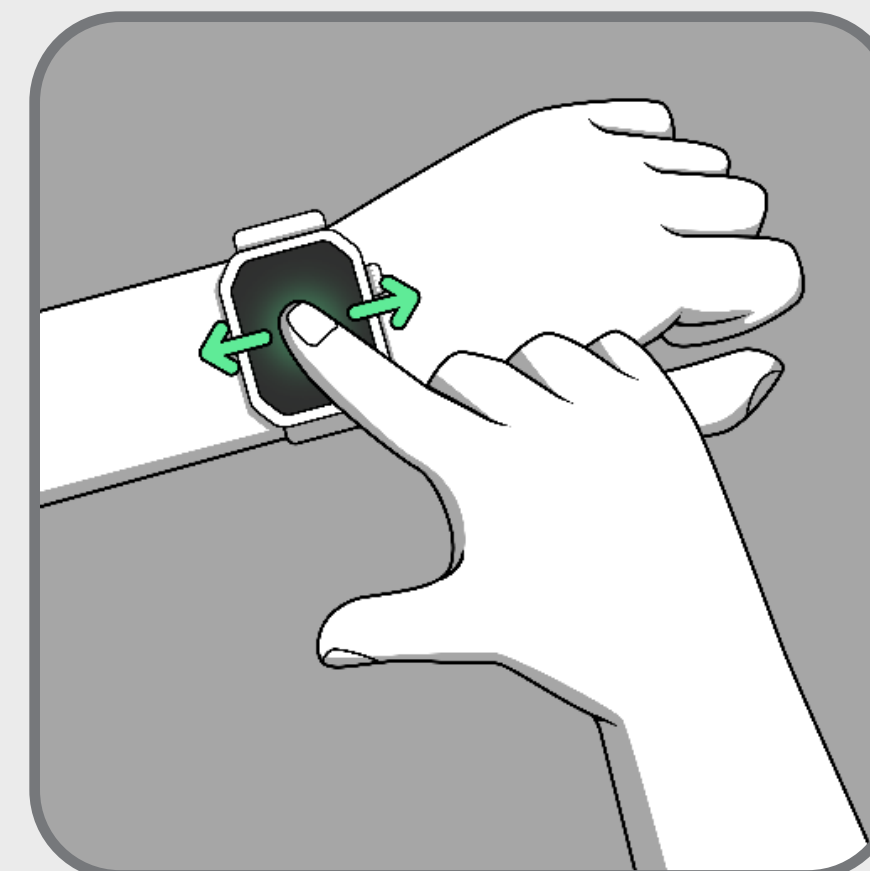
When the watch is awake, you can use several touch gestures to interact with the screen.



Tap: Touch one finger on the screen



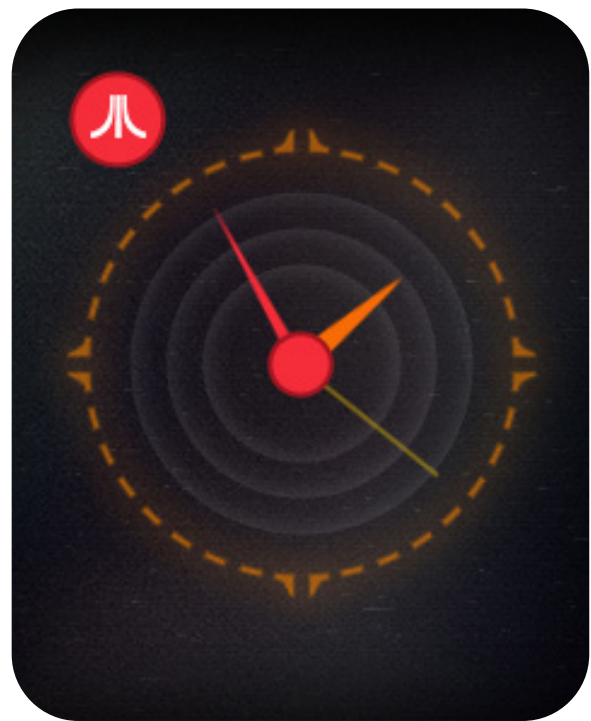
Swipe: Move one finger across the screen--up, down, left, or right



Drag: Move one finger across the screen without lifting

Home Screen

Once you have finished with setup, you will be placed on the home screen. This screen has various watch faces that you can select from.



To change your watch face, you can swipe up and down, or rotate the crown on the side of your watch.

Navigation

You can navigate to different core applications by swiping left and right. This will take you through a list of the following:

- Home Screen
- Heart Rate Monitor
- Step Counter
- Calorie Counter
- Daily Stats
- Missile Command
- Pong
- Centipede
- Super Breakout

To access additional applications, you can press the Crown button. If you are not on the Home Screen, the Crown button will first take you back to Home. Press the Crown while on the Home Screen to launch the App List.



App List

The App List has a scrollable list of applications that you can access. For more information on each application, visit the Apps section of this guide.

To exit the App List or any current application, simply press the Crown button to go back to your previous screen.



Gameplay Quick Start

To quickly access game programs, you can press the side button on your watch. If you are not on the Home Screen, the side button will first take you back to Home. Press the Side button while on the Home Screen to launch the Game List.

Playing ATARI 2600™ game programs

ATARI 2600™: My Play Watch comes with four different game programs including Missile Command, Pong, Centipede, and Super Breakout.



Exiting Games

While in gameplay, you can press the Crown button to pause the game and bring up a Confirm Quit screen. Select YES to exit.

You can access the game through two different methods:



Swipe to the left while on the Home Screen



Launch the Game List via the watch's side button and select the game you want to play



Game Options

You can modify the control sensitivity of Pong, Centipede, and Super Breakout by visiting the Game Options screen.

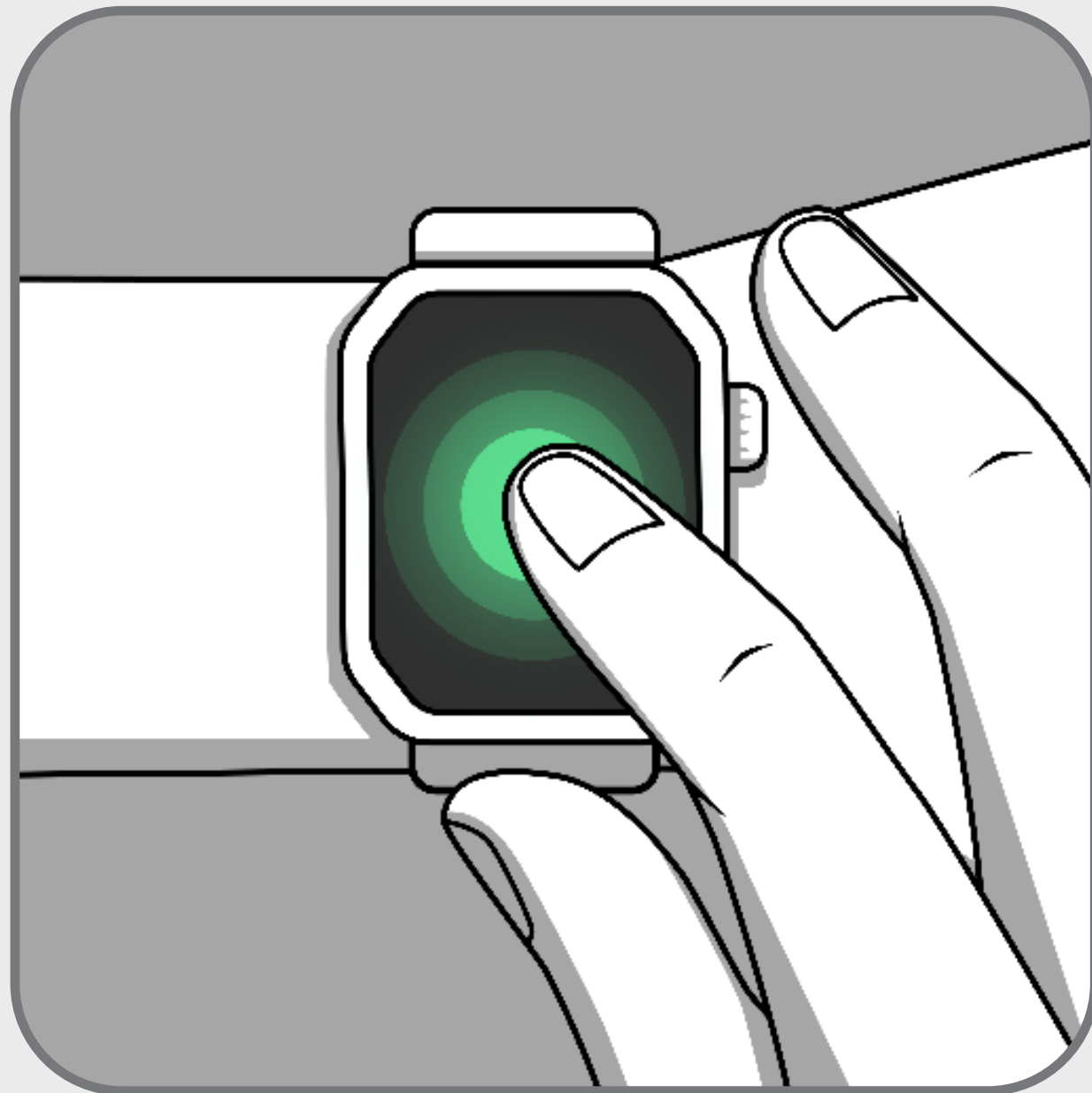
To access this screen, visit the App List, select SETTINGS, and then select GAME OPTIONS.

By default, control sensitivity for each game is set to 3.

Waking the Screen

The watch screen will automatically go to sleep after 8 seconds of inactivity or if the watch detects that your wrist has been lowered.

There are several ways to wake the screen:



Tap the screen



Press the side button



Raise your wrist towards your face



You can modify the duration the watch screen stays awake in the **Display** settings menu.



You can turn off the raise-to-wake functionality in the **Wake** settings menu. Note that turning off raise-to-wake will also disable the lower-to-sleep functionality.

Applications

CORE APPLICATIONS	
Heart Rate Monitor	Calculates your current heart rate in BPM (Beats-per-minute) To determine your current heart rate, place your watch on your wrist and wait 5-10 seconds for the watch to finish calculating.
Step Counter	Shows the number of steps you have taken today. This resets each day at midnight.
Calorie Counter	Shows an average of the number of daily calories you have burned based on steps taken. This resets each day at midnight.
Stats	Shows your stats including: <ul style="list-style-type: none">• Daily steps taken• Last Heart Rate Value recorded• Daily calories burned• High Scores for each game program
Missile Command	Play a watch optimized version of Missile Command for the Atari 2600™! Use your antiballistic missiles to stop the Krytol from destroying the cities of Zardon!
Pong	Play a watch optimized version of Pong for the Atari 2600™! Be the first to score 11 points to win!
Centipede	Play a watch optimized version of Centipede for the Atari 2600™! Use your magic wand to clean up the Enchanted Forest!
Super Breakout	Play a watch optimized version of Super Breakout for the Atari 2600™! Clear rows of colorful bricks in this game of breakout!

Applications (Continued)

APP LIST APPLICATIONS	
Clock	A shortcut that returns you back to the Home Screen where you can view the current time
Alarm	Allows you to set up to 5 alarms. You can turn alarms off and on by pressing the toggle button next to them. If the toggle is green, the alarm is on and will trigger every day at the specified time.
Timer	Start a timer that counts down. Once started, the timer will continue to run even if you exit the screen. When the timer elapses, it will display an onscreen alert.
Stopwatch	Track lap times. Press the play button to start. Once the stopwatch has started, you can press the grey Stopwatch icon to mark a lap.
Calendar	View a calendar of the current month and year. The current day is highlighted in yellow. You can navigate through each month by pressing the buttons at the top of the screen or by rotating the Crown.
Calculator	Performs basic math calculations

Settings

Game Options	Allows modification of control sensitivity for ATARI 2600™ game programs. Visit the Game Options section of this guide for more details.
Battery	Displays the current battery percentage of the watch
Date	Allows modification of the current month, day, and year
Time	Allows modification of the current time
Power	Allows you to restart the watch or power it off
Fitness	Allows modification of your daily step goal
Brightness	Allows modification of your screen brightness
Display	<p>Allows modification of how long the screen will remain awake after last user input.</p> <p>Note that longer wake times can result in the battery draining faster. We recommend the default setting of 8 seconds.</p> <p>This wake time does not apply during ATARI 2600™ gameplay. Once gameplay has started, the screen will remain awake until the game is over.</p>

Settings (Continued)

Volume	Allows modification of the overall device volume. Setting the volume all the way to the left will mute the device.
Vibration	Allows toggling of vibration. Vibration is used in the following areas: <ul style="list-style-type: none">• Watch Boot Up Sequence• Alarm Alert• Timer Alert• Step Goal Achieved Alert
Wake	Allows toggling of raise-to-wake. Raise-to-wake detects if you have lifted your watch towards your face. If the watch is asleep, it will automatically wake up. Note that disabling raise-to-wake will also disable lower-to-sleep. This detects if the watch has been moved away from your face and will immediately put the watch to sleep, regardless of the wake time setting in your Display settings.
User Manual	Displays a QR code to access this guide online
About	Displays basic information about the watch
Factory Reset	Provides a confirmation button to perform a factory reset of the watch. Note that factory resetting will erase all data including daily streaks, game high scores, and created alarms. It will reset all settings to their default values and reboot the device back to the initial set-up screens.

Power Off

To power off your watch, press and hold the Crown button for 2 seconds. This will bring up the POWER screen. Select 'POWER DOWN' to power off the watch.

Note that while the watch is fully powered off, it cannot track important data including time & fitness. Once the watch is off, you can turn it back on by pressing and holding the Crown button.

Frequently Asked Questions (FAQs)

Q1: Why won't my watch turn on?

Ensure that your watch battery is charged. Connect your watch to the charger, and leave it for a minimum of 30 minutes. When you return to your watch, press the Crown button to wake it up. If the watch still does not turn on, try pressing and holding the crown button for 5 seconds to perform a reboot.

Q2: How do I access ATARI 2600™ game programs?

You can swipe left from the Watch Face screen to access the ATARI 2600™ game programs. Alternatively, you can launch the Game List and select a game program from there.

Q3: How do I extend the battery life of my watch?

Your battery life is directly tied to the amount of screen use throughout the day. To help increase battery life you can:

- Reduce the brightness of your screen in the Brightness settings.
- Turn off Raise to Wake in the Wake settings.
- Reduce the Screen Wake time in the Display settings.

Q4: Why is my watch screen flickering?

If the screen is constantly flickering on and off, this may be a result of the Raise to Wake functionality. Place the watch on a flat surface then navigate to the Wake screen within Settings. Turn off Raise to Wake to correct the issue.

For any additional support or questions, please contact help@myplaywatch.com.

Important Information

IMPORTANT SAFETY INFORMATION

CHARGING PRECAUTIONS

- Use only the included USB charging cable
- Ensure the watch is completely dry before charging
- Verify the charging port is free of moisture and debris
- Disconnect when fully charged
- Do not use damaged cables or adapters
- Do not attempt to open or service the device yourself
- Fully charge the device at least once a month to prevent battery degradation

WATERPROOF USAGE (IP67) This watch can be used in everyday situations with limited exposure to water, such as washing hands, rain, and car washing.

DO NOT USE THE WATCH:

- Submerged in water for extended periods
- In seawater, hot water, or hot springs
- In saunas or steam rooms
- While diving
- If the screen is broken or damaged
- With buttons pressed while wet

MEDICAL DISCLAIMER This watch is not a professional medical device. Any health or fitness data is for informational purposes only and should not be used for medical diagnosis, treatment, or prevention of disease. Always consult a qualified medical professional for health concerns.

FCC COMPLIANCE STATEMENT Note: This equipment has been tested and found to comply with the limits for a Class B digital device, pursuant to part 15 of the FCC Rules. These limits are designed to provide reasonable protection against harmful interference in a residential installation. This equipment generates, uses and can radiate radio frequency energy and, if not installed and used in accordance with the instructions, may cause harmful interference to radio communications.

Operation is subject to the following two conditions: (1) This device may not cause harmful interference, and (2) this device must accept any interference received, including interference that may cause undesired operation.

CAUTION: Changes or modifications not expressly approved by the party responsible for compliance could void the user's authority to operate the equipment.

Important Information (Continued)

ICES COMPLIANCE STATEMENT CAN ICES-003(B) / NMB-003(B)

This Class B digital apparatus complies with Canadian ICES-003. Cet appareil numérique de la classe B est conforme à la norme NMB-003 du Canada.

CALIFORNIA PROPOSITION 65 WARNING: This product can expose you to chemicals which are known to the State of California to cause cancer and birth defects or other reproductive harm. For more information go to www.P65Warnings.ca.gov.

RESPONSIBLE PARTY My Play Watch 14547 Hamlin Street Van Nuys, CA 91411 USA help@myplaywatch.com Model# ATA-BA1-01

LIMITED WARRANTY My Play Watch (“Company”) warrants this product against defects in materials and workmanship under normal use for a period of NINETY (90) DAYS from the date of retail purchase by the original end-user purchaser (“Warranty Period”). If a hardware defect arises and a valid claim is received within the Warranty Period, the Company will either (1) repair the product at no charge, using new or refurbished replacement parts, or (2) exchange the product with a product that is new or which has been manufactured from new or serviceable used parts and is at least functionally equivalent to the original product.

This warranty does not cover problems caused by: (1) accident, abuse, neglect, misuse; (2) conditions, malfunctions, or damage not resulting from defects in material or workmanship; (3) normal wear and tear; (4) operation outside published environmental or electrical parameters; (5) cosmetic damage or damage due to acts of God; (6) service performed by anyone who is not a representative of the Company; (7) the products of other manufacturers; (8) damage resulting from improper use in water or failure to follow the waterproof usage precautions.

TO THE EXTENT PERMITTED BY APPLICABLE LAW, THIS WARRANTY AND THE REMEDIES SET FORTH ABOVE ARE EXCLUSIVE AND IN LIEU OF ALL OTHER WARRANTIES, REMEDIES AND CONDITIONS, WHETHER ORAL, WRITTEN, STATUTORY, EXPRESS OR IMPLIED.

Some states do not allow limitations on how long an implied warranty lasts, so the above limitation may not apply to you. This warranty gives you specific legal rights, and you may also have other rights which vary from state to state.

OBTAINING WARRANTY SERVICE To obtain warranty service, contact My Play Watch at help@myplaywatch.com. Proof of purchase and shipping and handling fee are required.